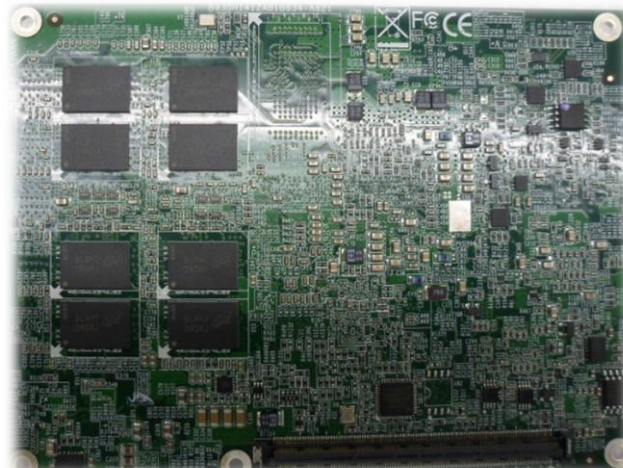


# PCOM-B634VG-A

Intel® Xeon® Processor D based Type 10 Basic Form Factor COM Express module with DDR4 ECC SDRAM, VGA, dual 10 Gigabit Ethernet, SATA and USB 3.0



Portwell's PCOM-B634VG-A COM Express module is built with mounted memory for compact solutions, and supports an industrial temperature range of -40°C to 85°C. Featuring Intel® Xeon® Processor D series with 8 CPU cores, 10GbE Ethernet KR interface and DDR4 ECC SO-DIMM support, the PCOM-B634VG-A delivers high computing power and excellent Ethernet performance. In addition, it is designed with expandability via PCIe Gen3 interface supporting high-speed I/O card for broader applications, and VGA and legacy interfaces enabling easy upgrade.

## FEATURES

- Intel® Xeon® Processor D series
- DDR4 2133/1600 ECC up to 16GB
- Support 7x USB 2.0, 4x USB 3.0, 4x SATA 3.0, 8x PCIe x1 Gen 2.0, 1x PCIe x16 Gen 3.0
- One VGA and HDMI, 10GbE interface

## ORDERING GUIDE

PCOM-B634VG-A	Type 10 Basic Form Factor COM Express module based on Intel® Xeon® Processor D series
---------------	---

## GENERAL

<b>Form Factor</b>	Type 10 Basic Form Factor COM Express
<b>Processor</b>	<ul style="list-style-type: none"> <li>• Intel® Xeon® Processor D series</li> <li>• Up to 8 cores</li> <li>• Up to 45W</li> <li>• SoC</li> </ul>
<b>Memory</b>	Up to 16GB DDR4 2133/1600 ECC
<b>BIOS</b>	AMI Aptio V
<b>Watchdog Timer</b>	Programmable via S/W from 1 sec to 255 min
<b>Hardware Monitoring</b>	ITE 8528, CPU, voltage, temperature
<b>Storage Devices</b>	3x 6Gb/s SATA
<b>Audio</b>	Intel® High Definition Audio (2x channels delivering 192kHz 32 bits, and 8x channels delivering 96kHz 32 bits)

## I/O INTERFACE

<b>Ethernet</b>	<ul style="list-style-type: none"> <li>• Intel® Ethernet Controller I210IT</li> <li>• Support two 10GbE (PHY) and one 1GbE (WGI218LM)</li> </ul>
<b>PCIe Expansion</b>	<ul style="list-style-type: none"> <li>• 1x PCIe Gen 3 x16</li> <li>• 1x PCIe Gen 2 x 8</li> </ul>
<b>USB</b>	<ul style="list-style-type: none"> <li>• 7x USB2.0</li> <li>• 4x USB3.0</li> </ul>
<b>Connector</b>	COM Express Connector x1
<b>Others</b>	SPI, SMBUS, GPIO, I2C, UART, TPM

## DISPLAY

<b>Display Interface</b>	<ul style="list-style-type: none"> <li>• VGA</li> <li>• DP</li> <li>• HDMI</li> </ul>
--------------------------	---

## Mechanical & Environment

<b>Dimension</b>	125 x 95mm
<b>Environment</b>	<ul style="list-style-type: none"> <li>• Operating temperature: 0°C~60°C</li> <li>• Relative humidity: 5~95%</li> </ul>